

## TWO GREAT DINING EXPERIENCES



**Lunch at The Cafe**  
**Tuesday - Sunday 11 - 2**

**Dinner at the Restaurant & Cafe**  
**Tuesday - Sunday 4-10**

**Breakfast**  
**Saturday & Sunday 9 - 2**

## Art Exhibit

**July 17 - 18**  
**Artists with Attitude**

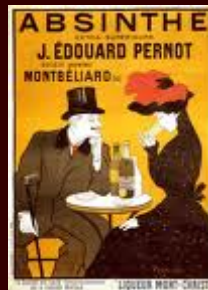


[Patty Forte Linna](#)

[Pepper Peterson](#)



[Liana Bennett](#)



## **Pacifique Absinthe Party**

**&**

**Food Pairing**

**Saturday July 17th**

**6 - 9 pm**

**Three Drinks**

**&**

**Food Pairings for \$18**

**RSVP to Preservation Kitchen**



## **Wine Tasting**

**with**

**Milbrandt Vineyards**

**Sunday, July 18th**

**4 - 7 pm**

**\$6**



## **Wine Maker's Dinner**

**Thursday, July 22nd**

**6:30 pm**

**\$55**

**5 Courses Paired with Kana Wines**

## Reservations Required

Reservations may now be made on line:

[Preservation Kitchen Reservations](#)

17121 Bothell Way NE

Bothell WA 98011

425.408.1306

[www.preservationkitchen.com](http://www.preservationkitchen.com)